

Installing Oracle Express

Download Oracle express from

<http://www.oracle.com/technology/software/products/database/xe/index.html>

or from instructor's web site

There is an interactive tutorial on how to install Oracle Express

Click the following link

<http://st-curriculum.oracle.com/tutorial/DBXETutorial/index.htm>

click this link to jump directly to installation.

Choose installation for windows if you are using windows, and installation for linux if you are using linux.

http://st-curriculum.oracle.com/tutorial/DBXETutorial/html/module1/les01_install_showme.htm

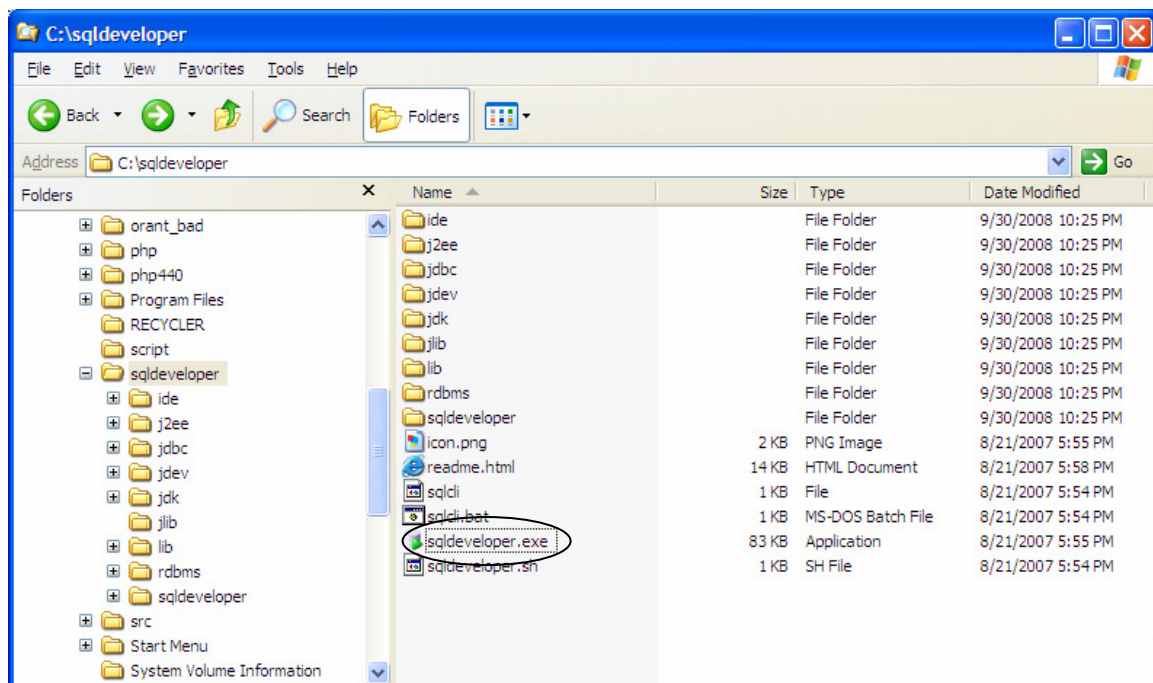
Connecting SQL Developer to Oracle Express 10g

Download SQL Developer from

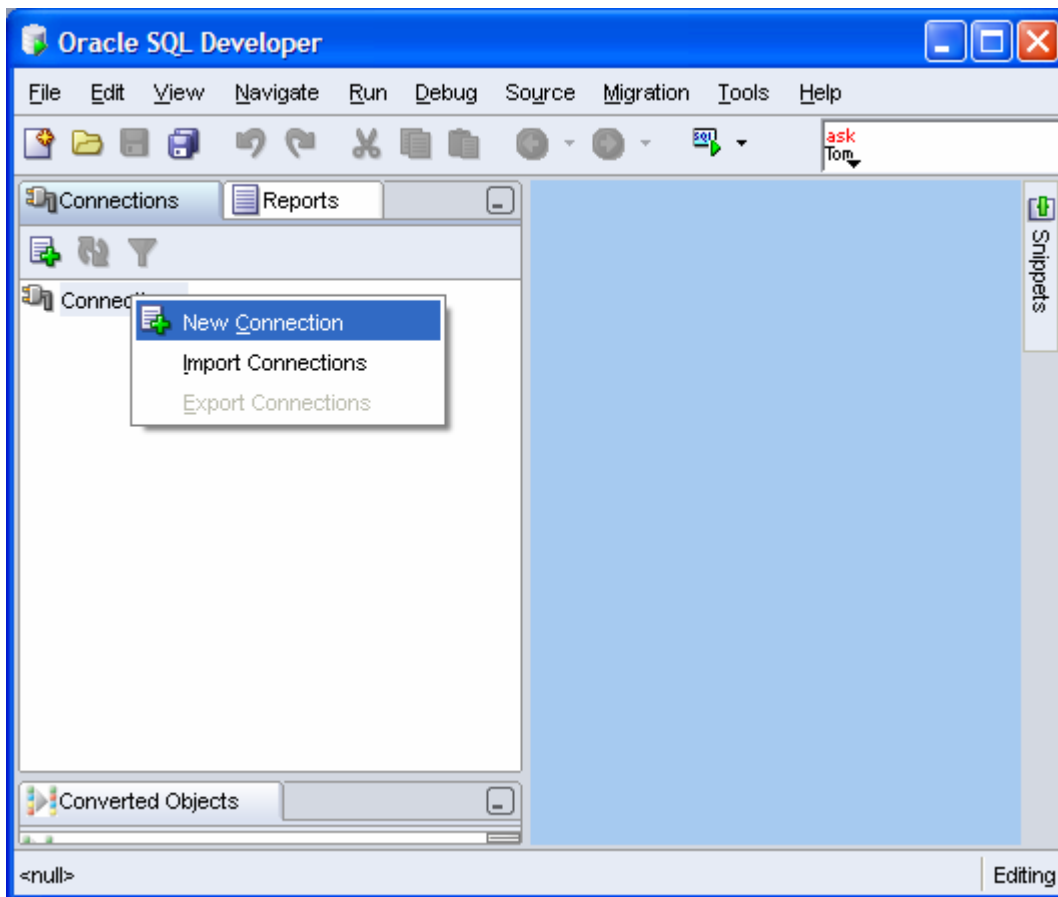
<http://www.oracle.com/technology/software/products/sql/index.html>

or from instructor's website

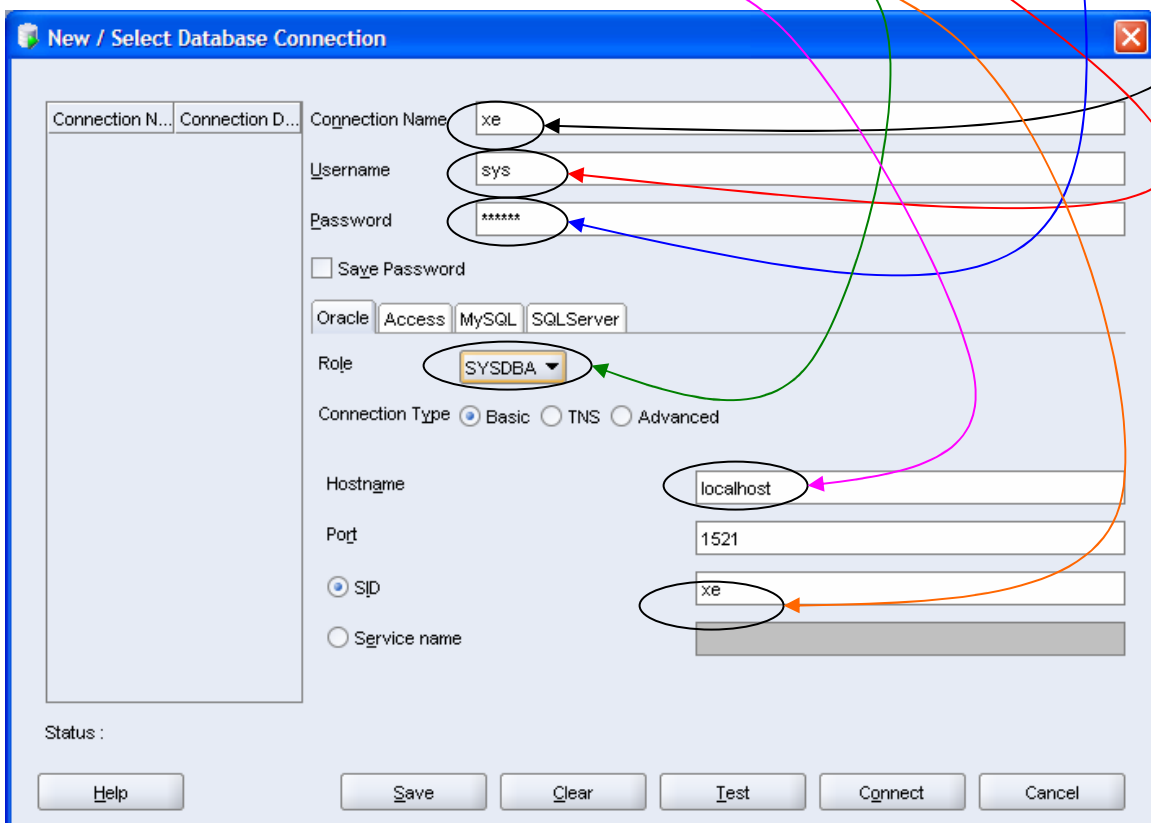
1. Unzip Oracle developer file.
2. No installation needed to run SQL developer, just unzip the files and
3. Run SQL Developer by clicking on sqldeveloper.exe



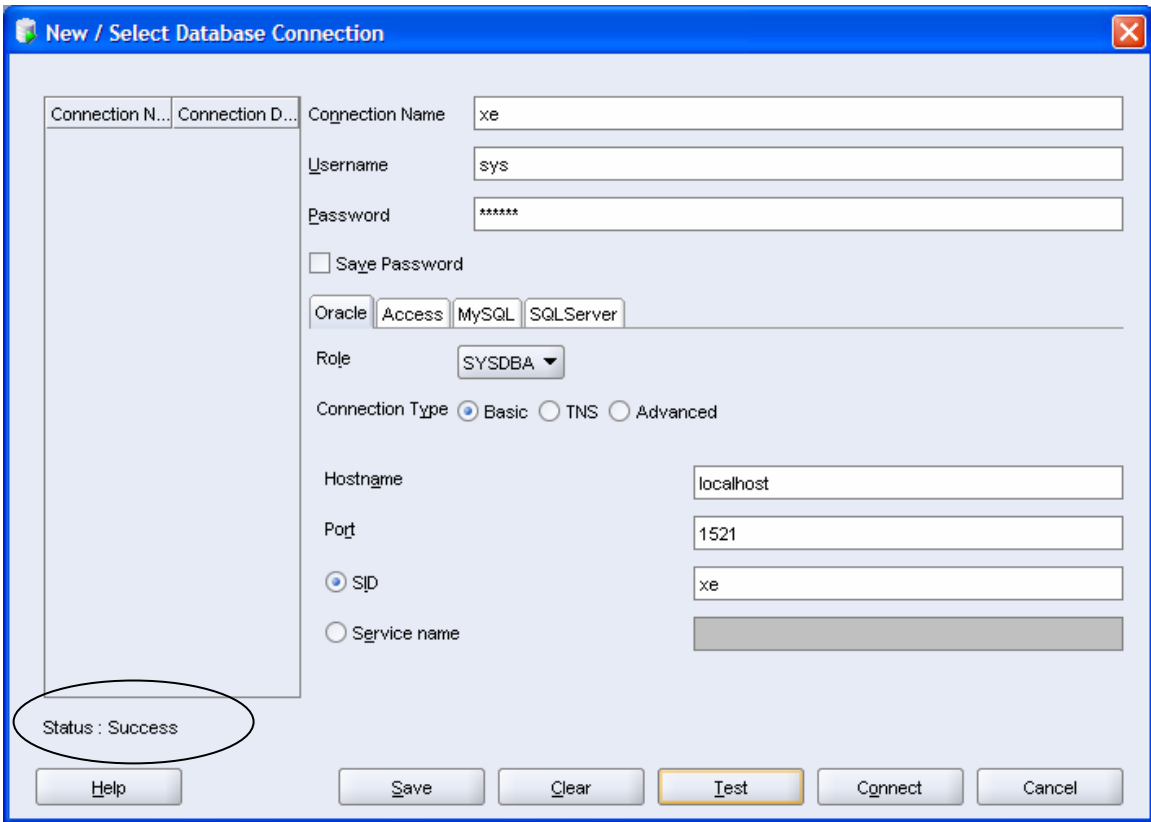
4. Create a new connection by right click on Connections object on the left panel, and click New Connection



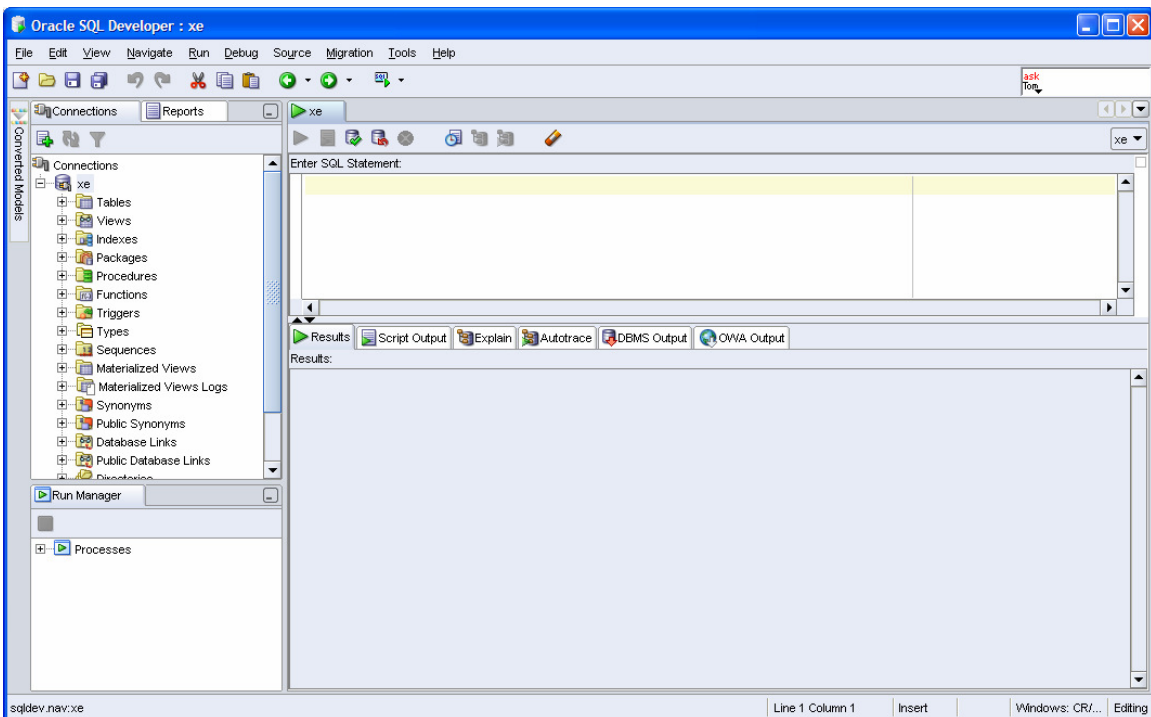
5. Fill out the "Connection Name" with "xe" , xe is the default name for oracle Express database
6. Fill out "Username" with "sys" , NOT "system"
7. Fill out the password with your password when you installed Oracle Express
8. Click "Role" and choose "SYSDBA"
9. Make sure SID is "xe"
10. Make sure hostname is localhost



11. Click Test to test the connection , you should see the status is success



12. Click Connect when done, you will see the following screen



How to create users

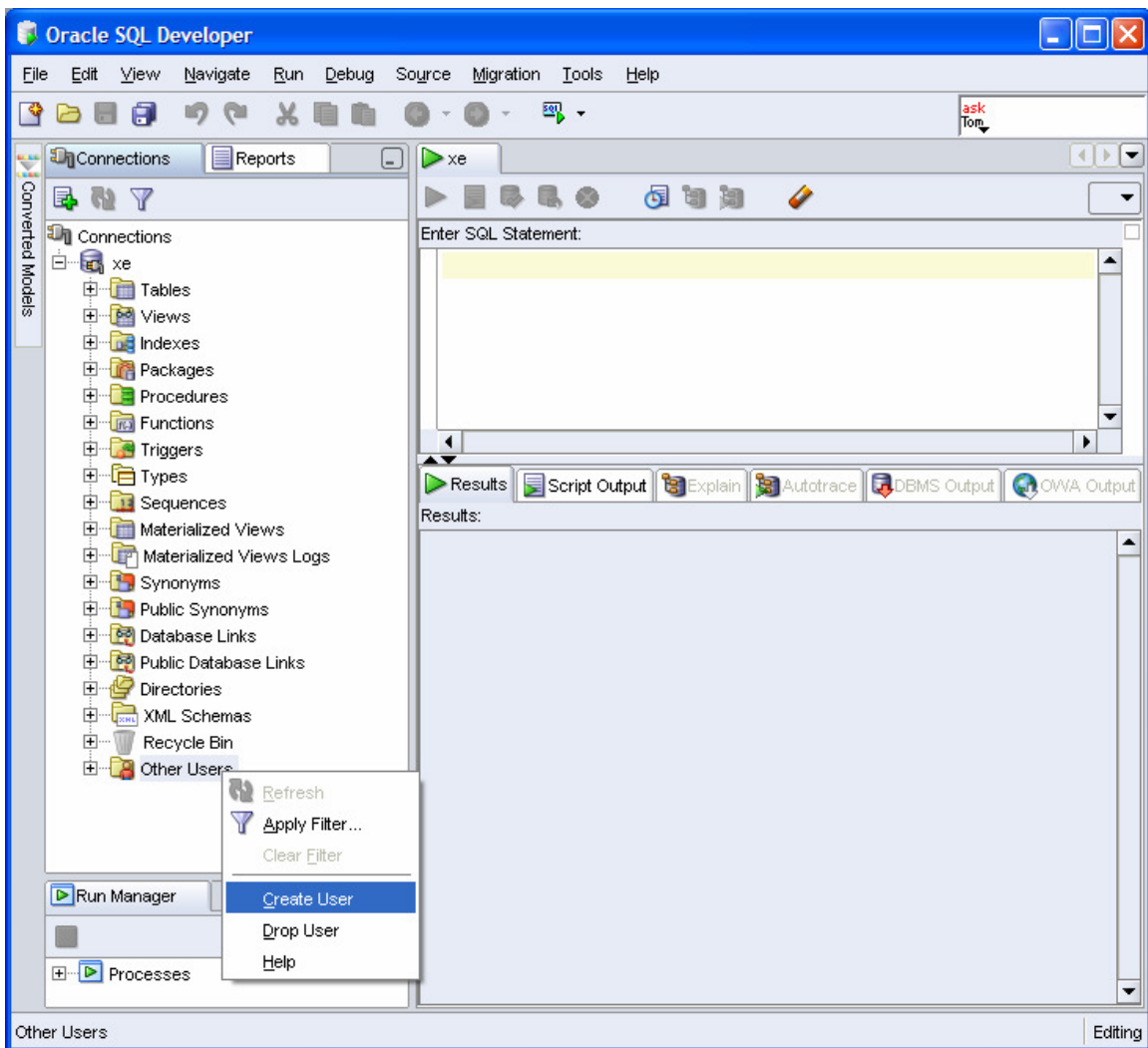
The user name you are using is “SYS” , which is a system users.

If you expand Tables object on the left, you will see a lot of system tables.

For this course, you can create a separate user to store all your tables related with this course.

The following steps show how to create users

1. Right click on the “Other Users” object at the left, choose “Create users”



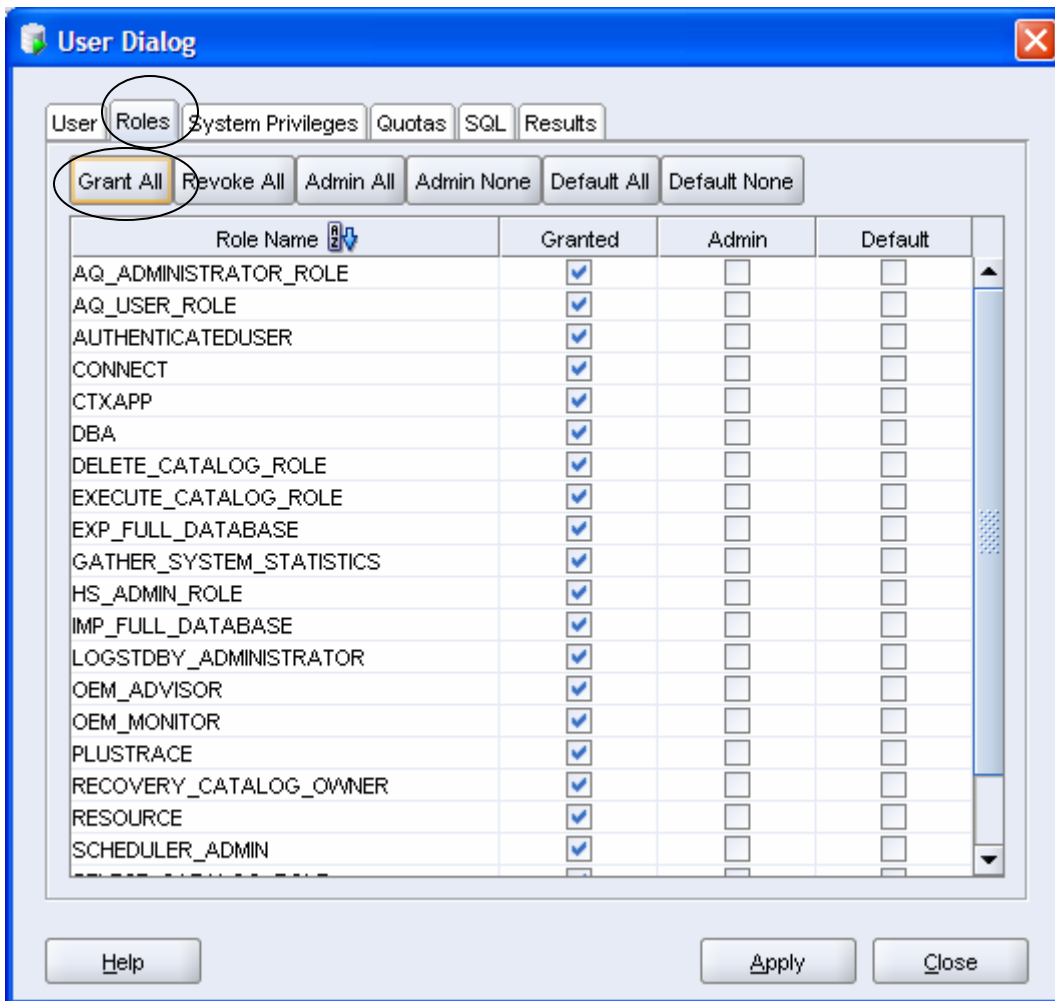
2. You will see the following screen. Enter a user name of your choice, and the password

The image shows a 'User Dialog' window with a blue title bar and a close button in the top right corner. The window contains several tabs: 'User', 'Roles', 'System Privileges', 'Quotas', 'SQL', and 'Results'. The 'User' tab is selected. The form fields are as follows:

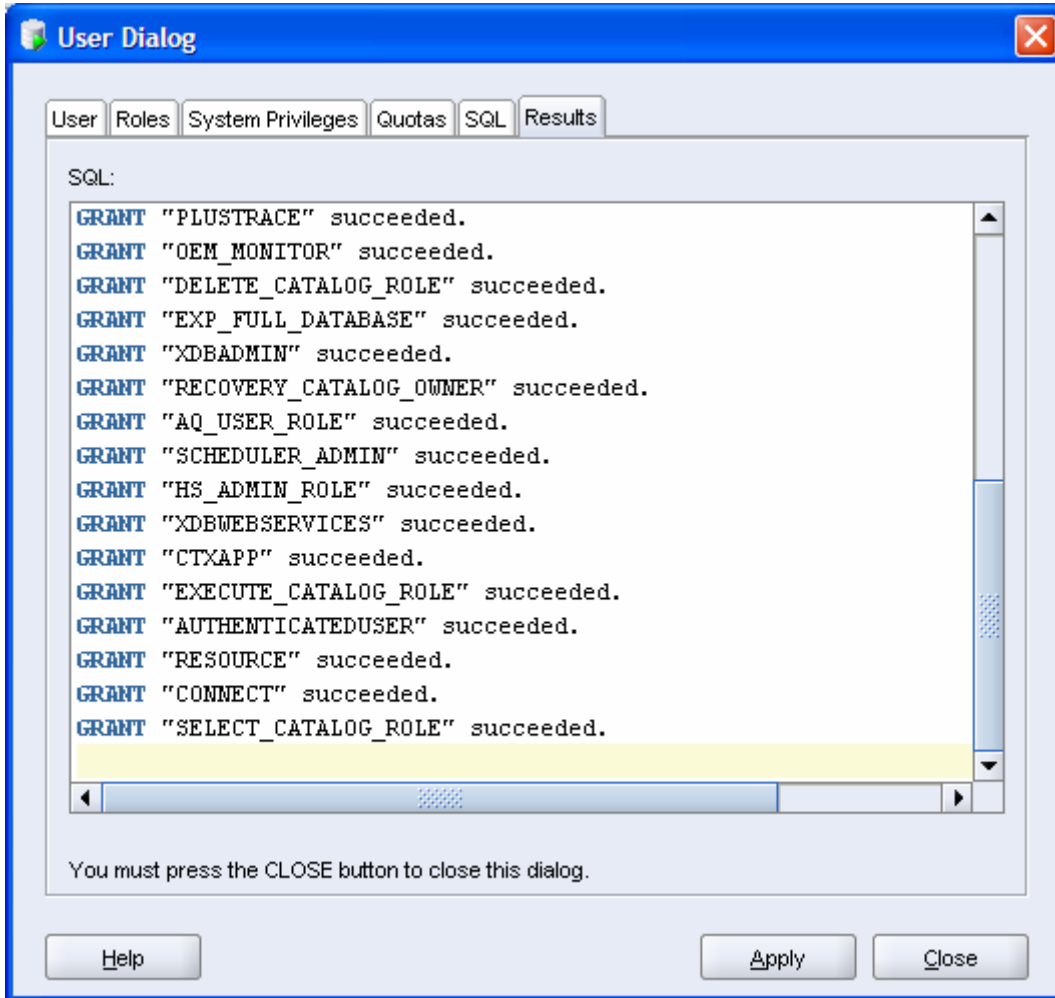
- User Name:** A text input field containing 'sjsu'.
- New Password:** A text input field containing '****'.
- Confirm Password:** A text input field containing '****'.
- Options:** Two checkboxes are present: Password expired (user must change next login) and Account is Locked.
- Default Tablespace:** A dropdown menu.
- Temporary Tablespace:** A dropdown menu.

At the bottom of the dialog, there are three buttons: 'Help', 'Apply', and 'Close'.

3. Click “Roles” tab , click “Grant All” and then click “Apply”

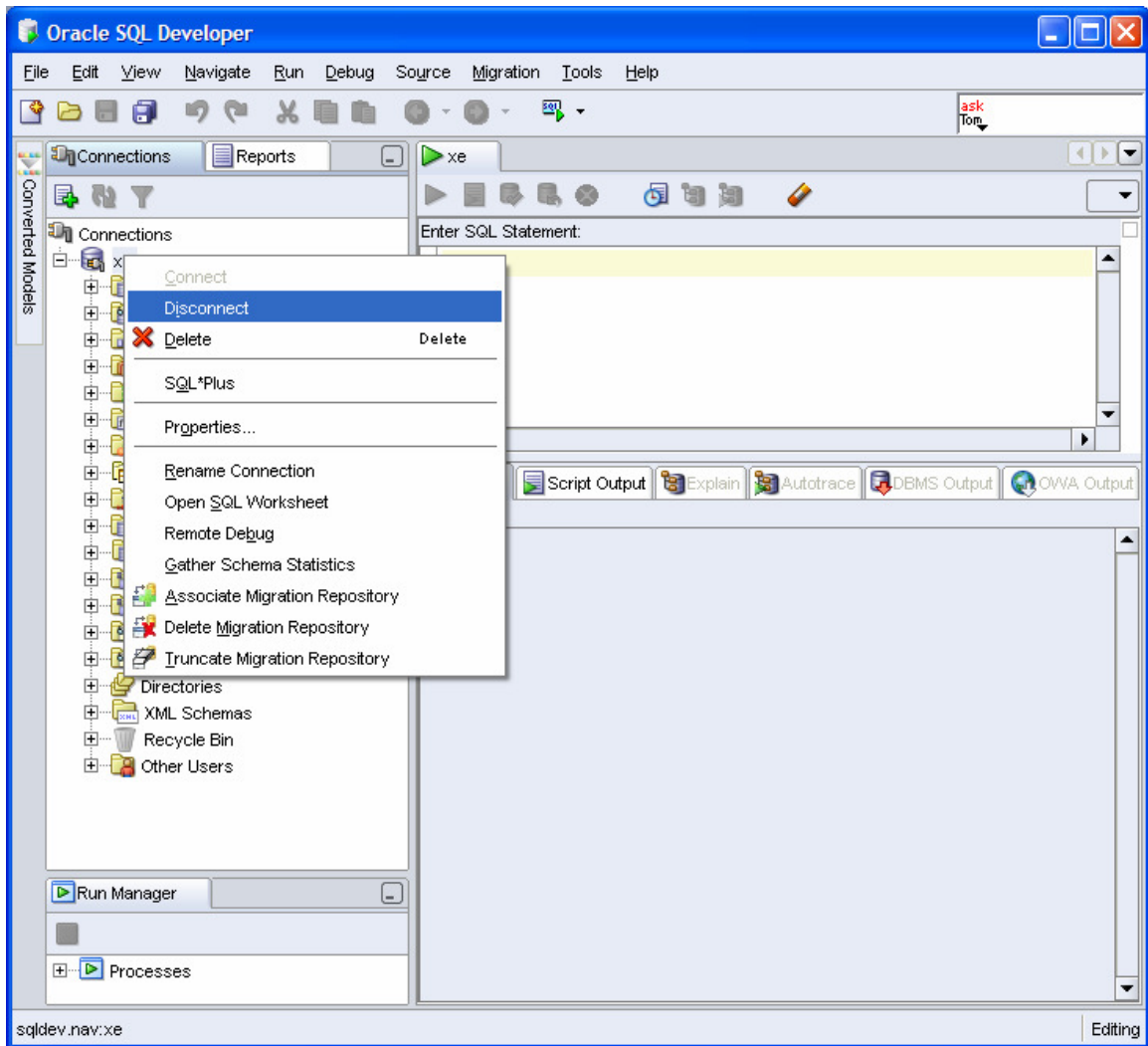


4. After you click “Apply”, the following screen will appear

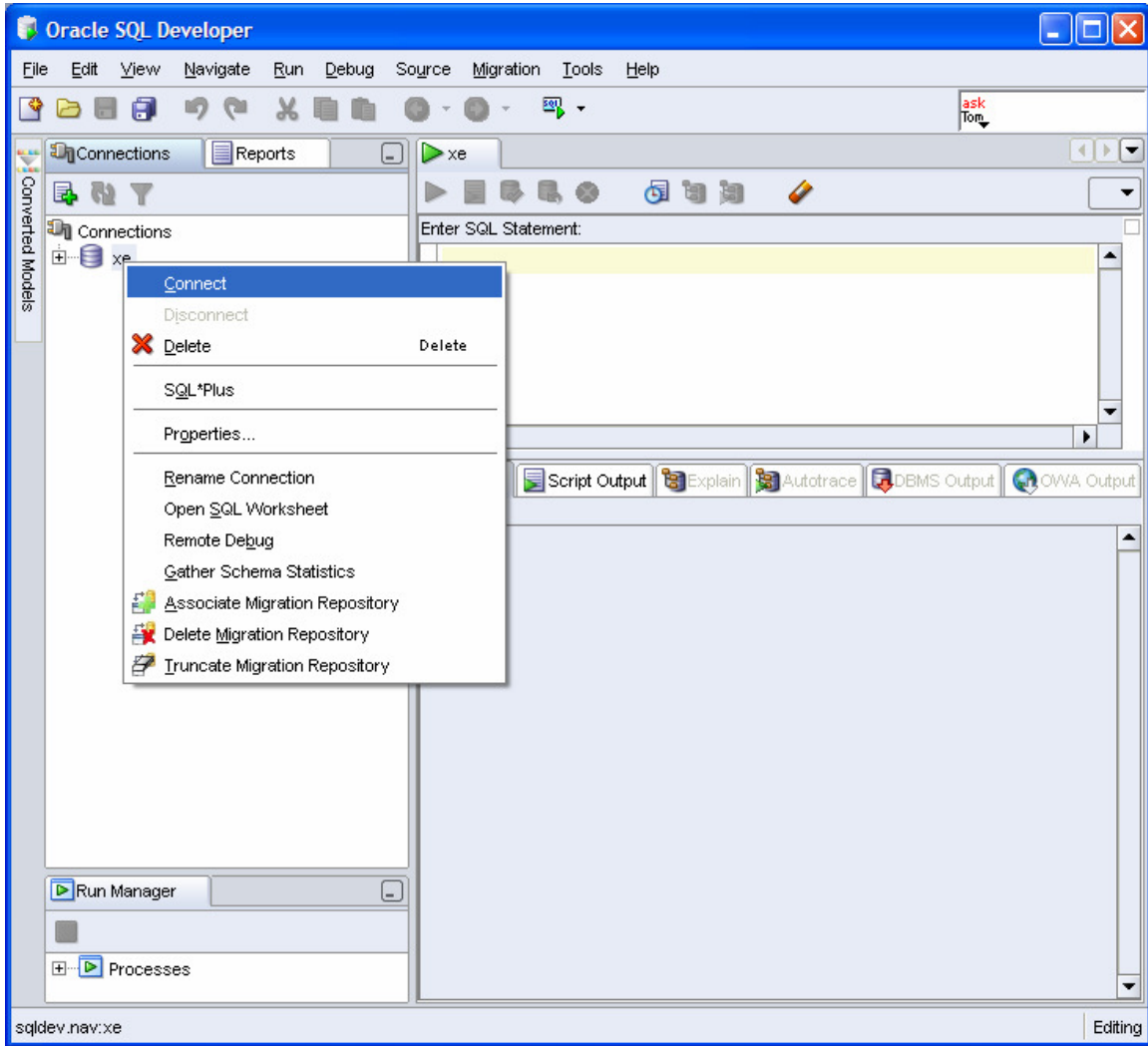


5. After all “GRANT ...” commands are executed, click Close

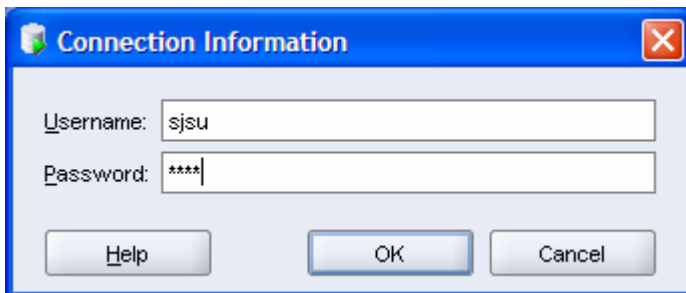
6. Disconnect the connection by clicking the connection name (“xe”) and then choose disconnect



7. After disconnected, right click on xe object, choose connect



8. Enter the user name and password you have just created



9. You are ready to execute SQL commands