

**Installation Instructions for Oracle 10g**  
CS257: Dr. T.Y. Lin  
Team #2: Amie Radenbaugh, Sean Gilpin, Yue Lu  
02/11/08

- 1) Click on setup.exe
- 2) Accept the default Oracle Home Location. Install the “Enterprise Edition” and create a Starter Database. Accept the default parameters and enter a password.

**Oracle Database 10g Installation - Installation Method**

### Select Installation Method

**Basic Installation**  
Perform full Oracle Database 10g installation with standard configuration options requiring minimal input. This option uses file system for storage, and a single password for all database accounts.

Oracle Home Location:

Installation Type:

Create Starter Database (additional 720MB)

Global Database Name:

Database Password:  Confirm Password:

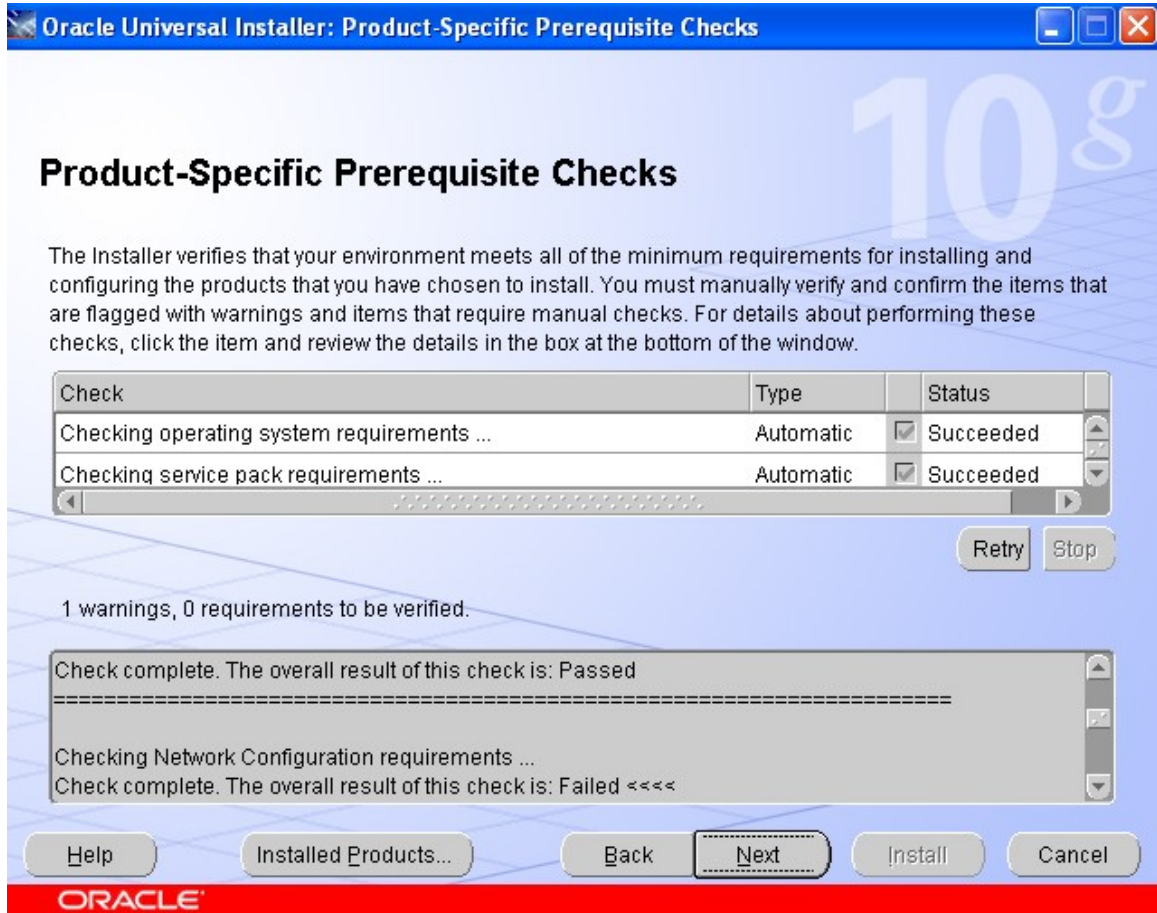
This password is used for the SYS, SYSTEM, SYSMAN, and DBSNMP accounts.

**Advanced Installation**  
Allows advanced selections such as different passwords for the SYS, SYSTEM, SYSMAN, and DBSNMP accounts, database character set, product languages, automated backups, custom installation, and alternative storage options such as Automatic Storage Management.

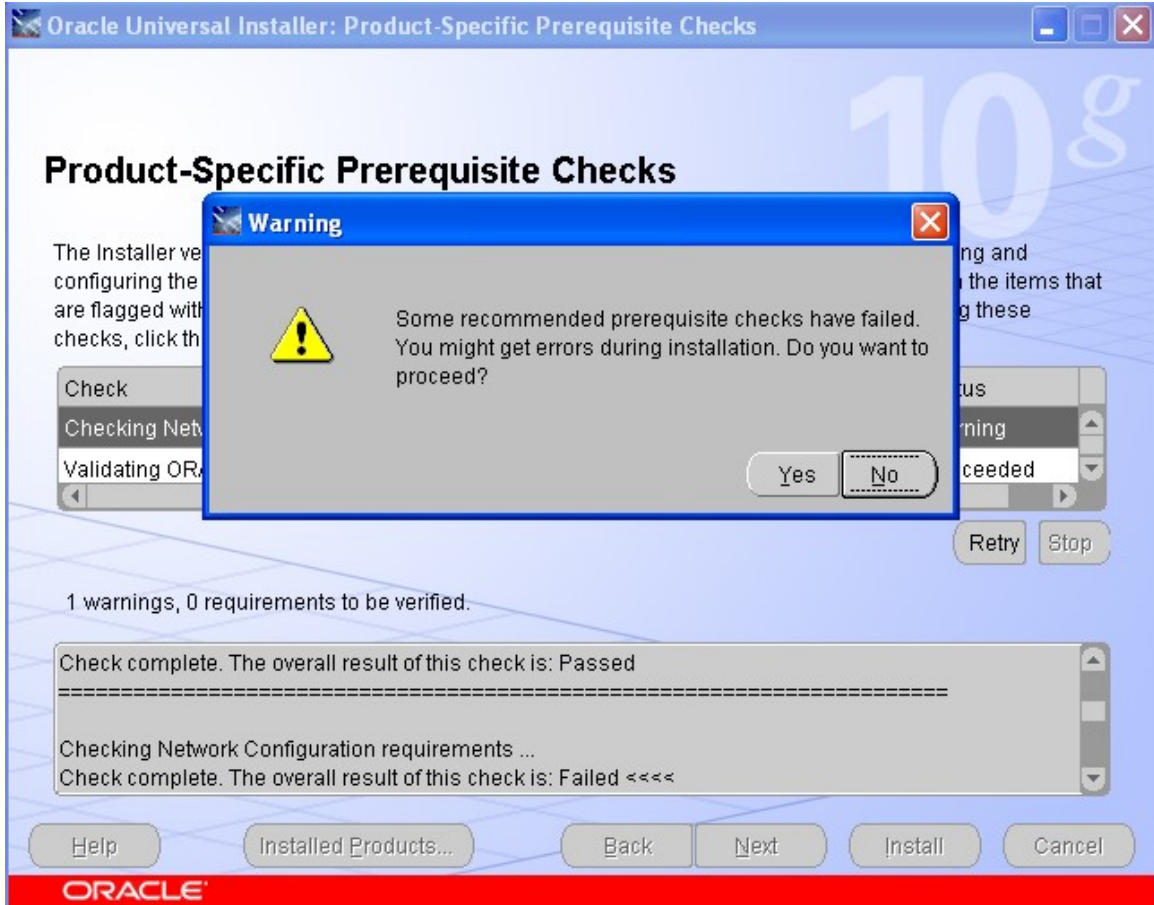
**ORACLE**

- 3) Click „Next“.

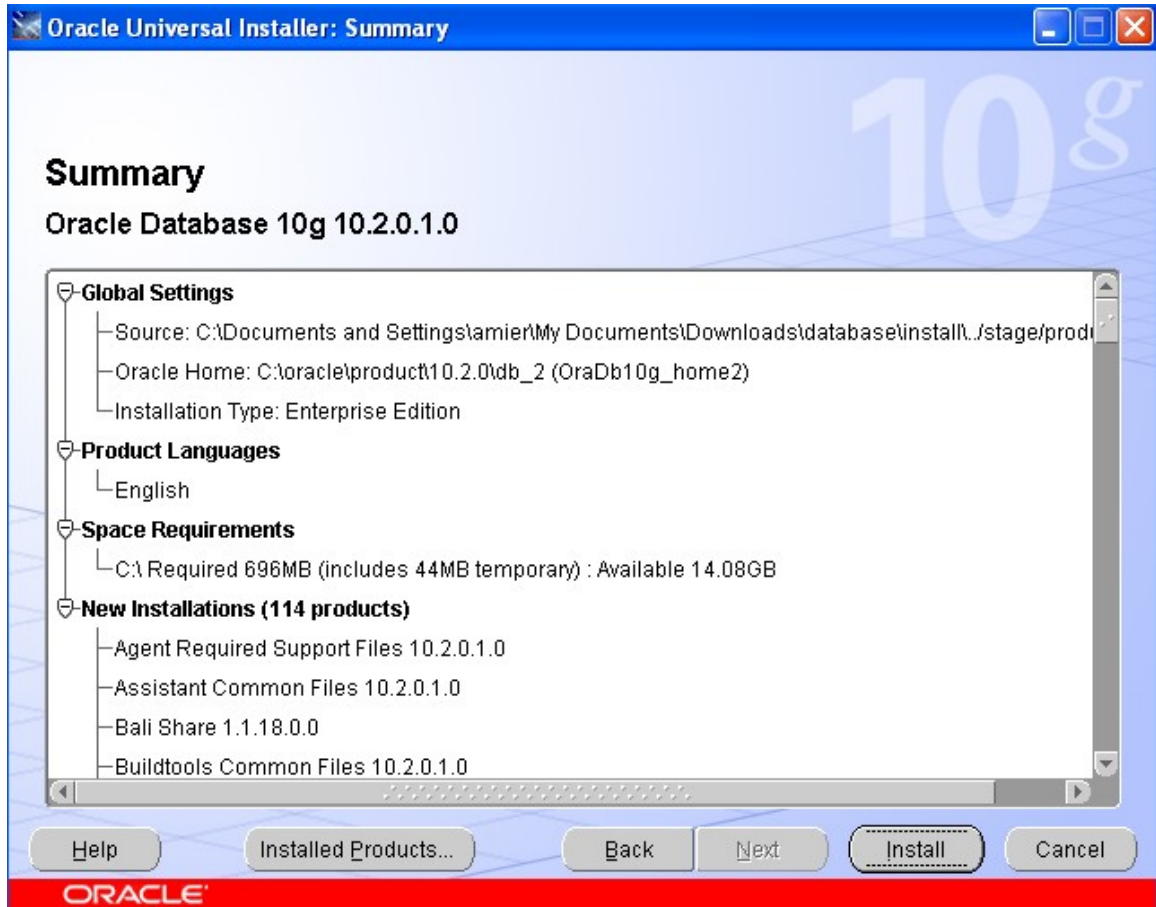
- 4) Verify that the overall result of the check is „Passed“ in the lower part of the window.



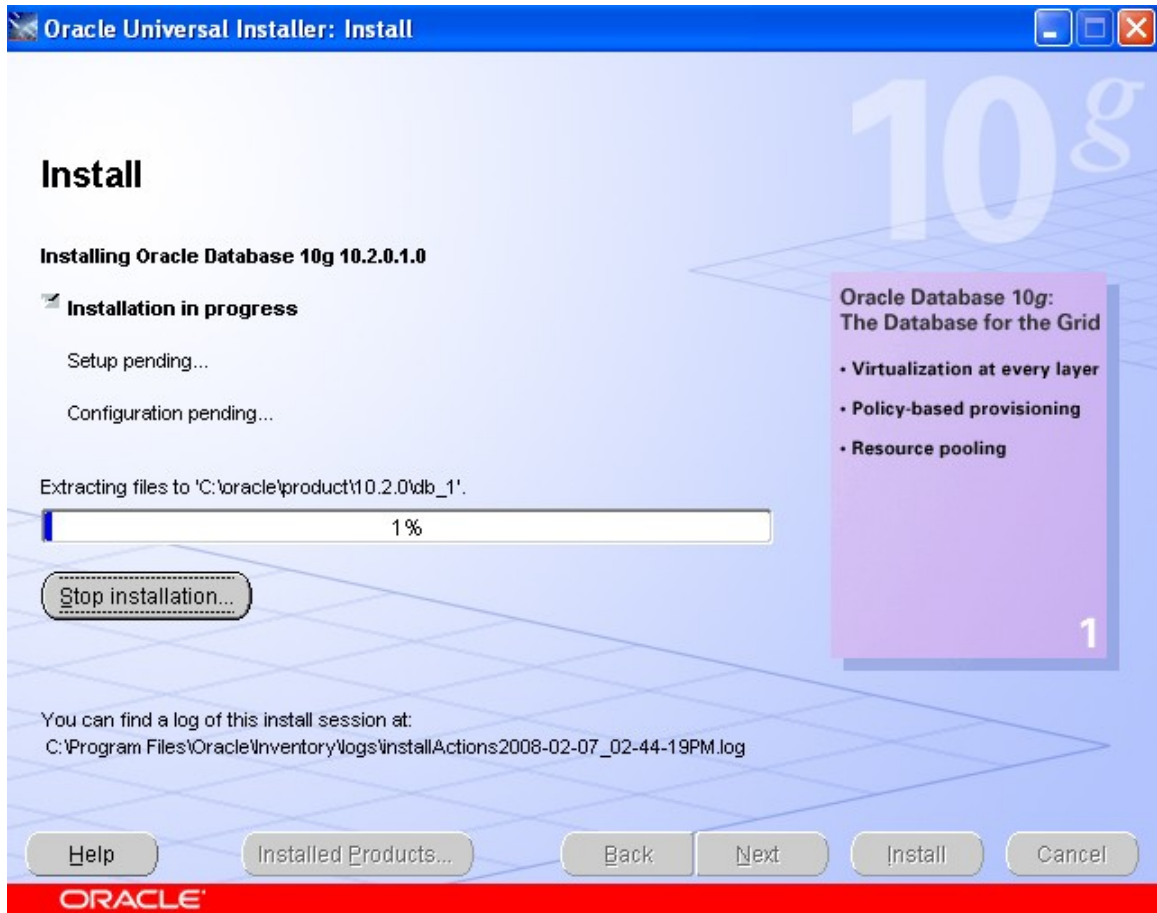
- 5) You may receive warning messages about prerequisite checks that failed. Look through the list of failed prerequisites to see how serious they are and if you can fix them. After fixing the prerequisites or if you can't fix them, click "Yes".



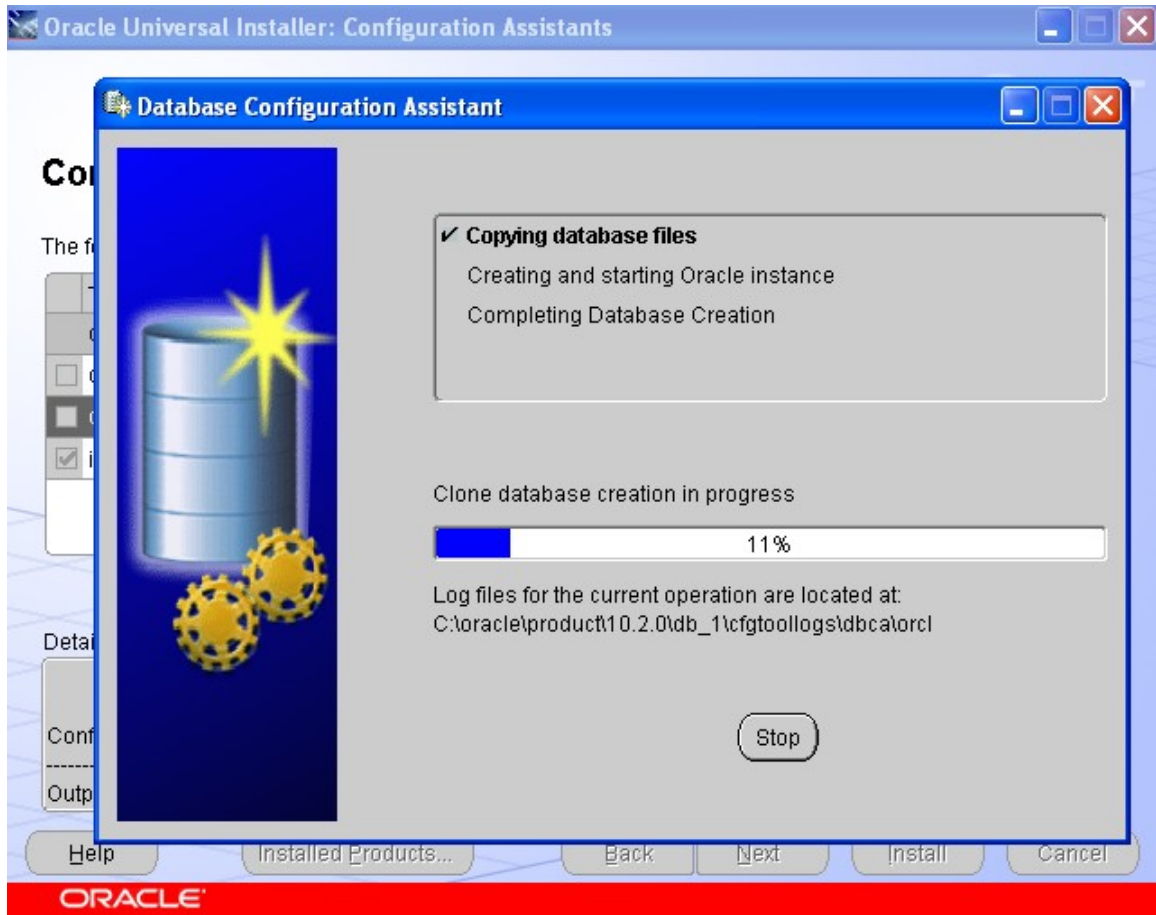
- 6) Check the Summary. Be sure that the following components will be installed: Oracle Database Server, Oracle Net Services Products: Client and Server, Oracle Database Utilities.

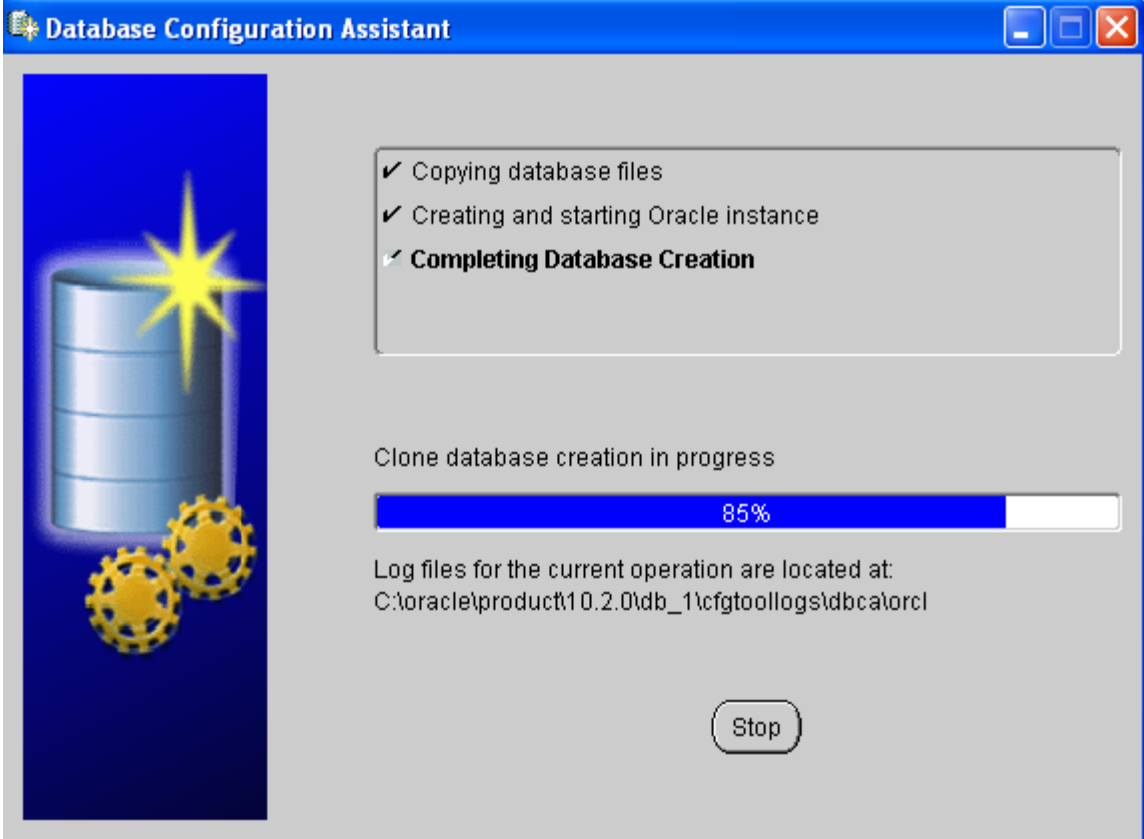


7) You will get a screen that looks like this:

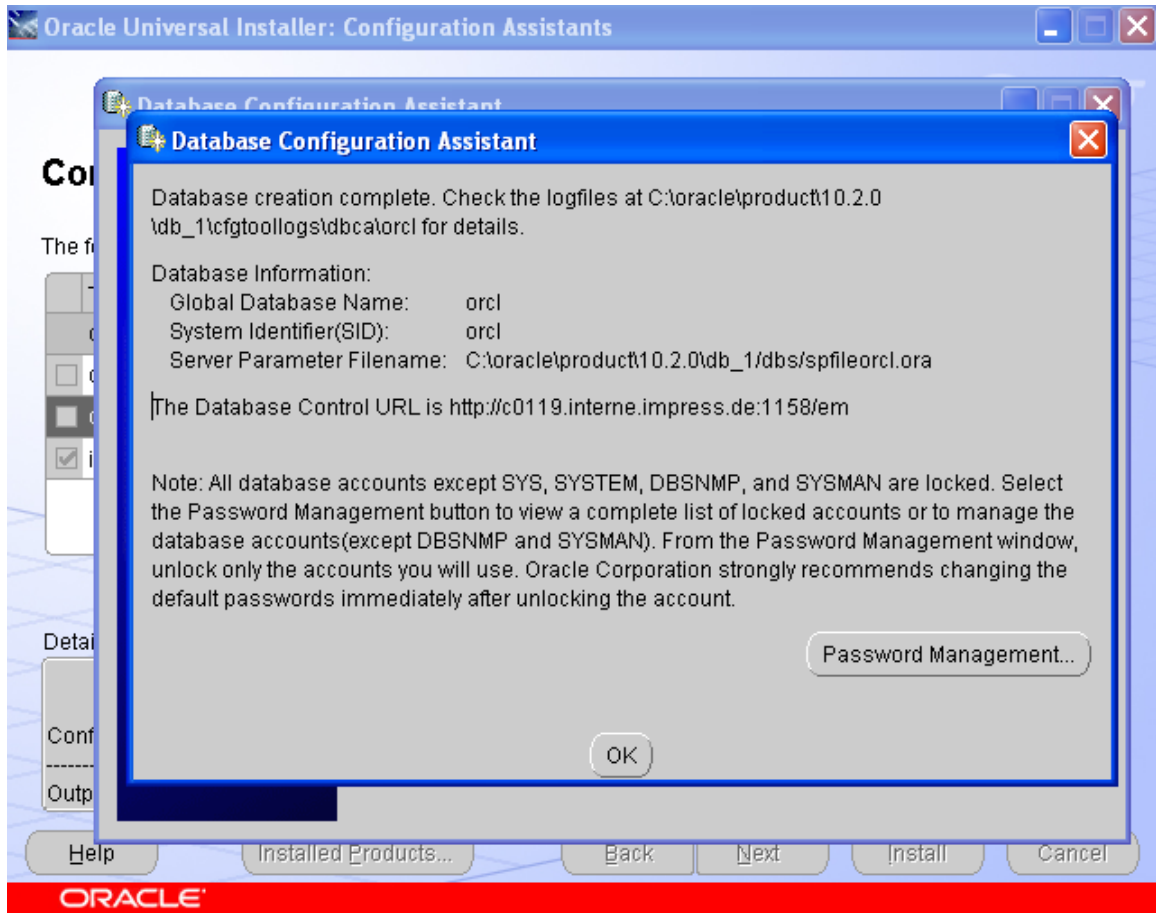


- 8) After the installation is finished, it will automatically start to create the “Starter” Database.



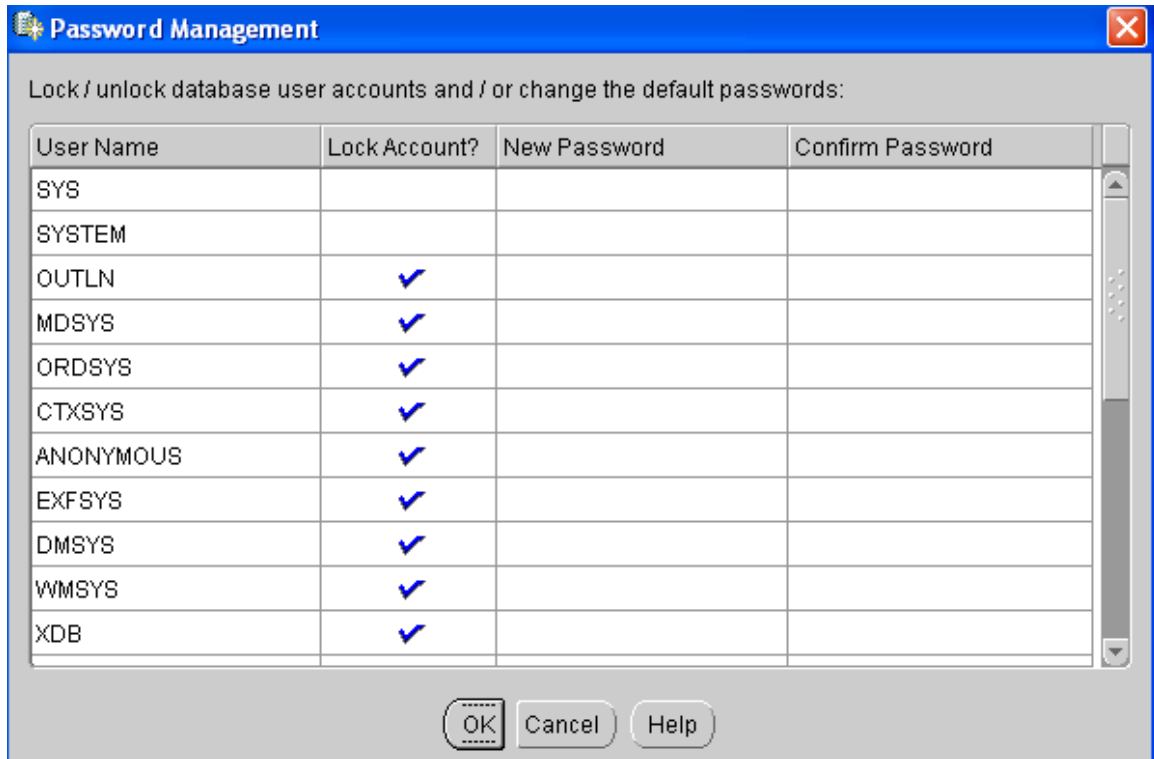


- 9) After the Database has been installed, click the “Password Management...” button.

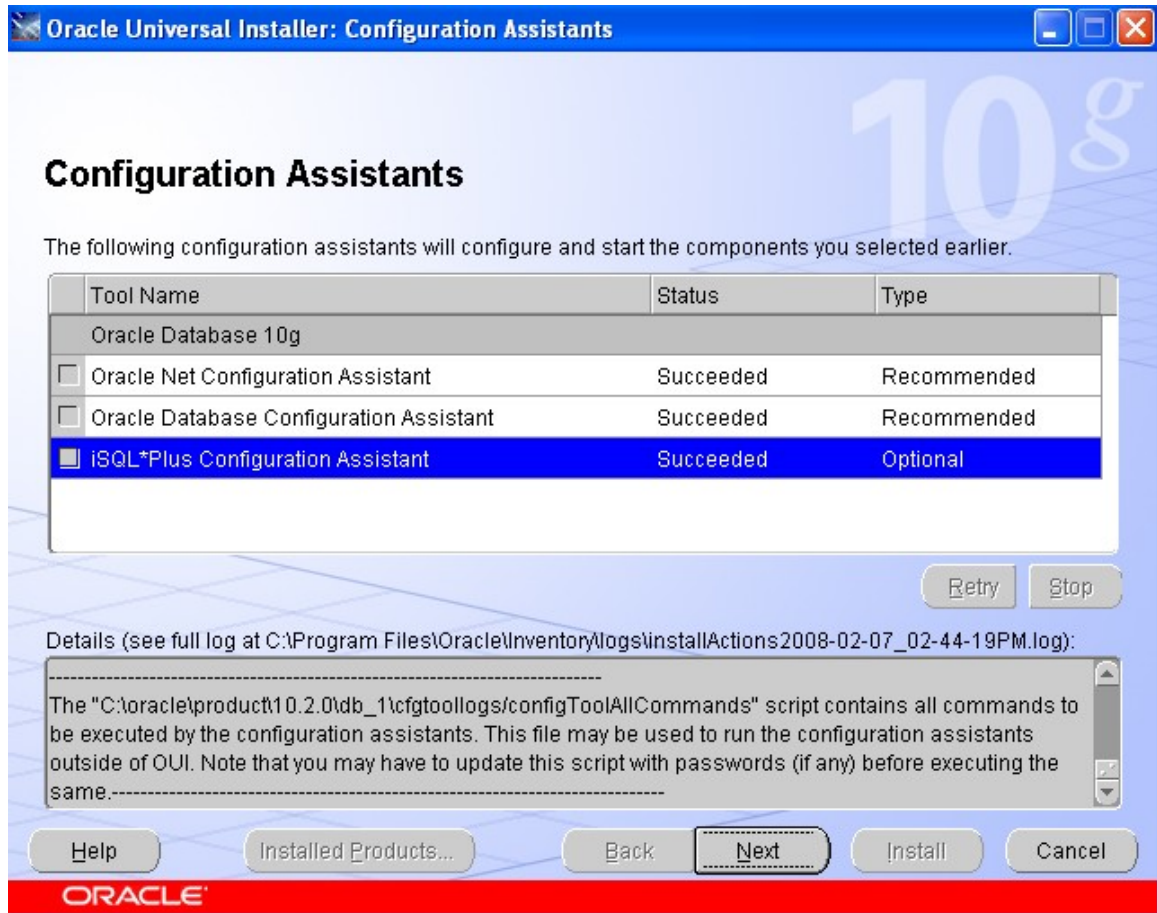




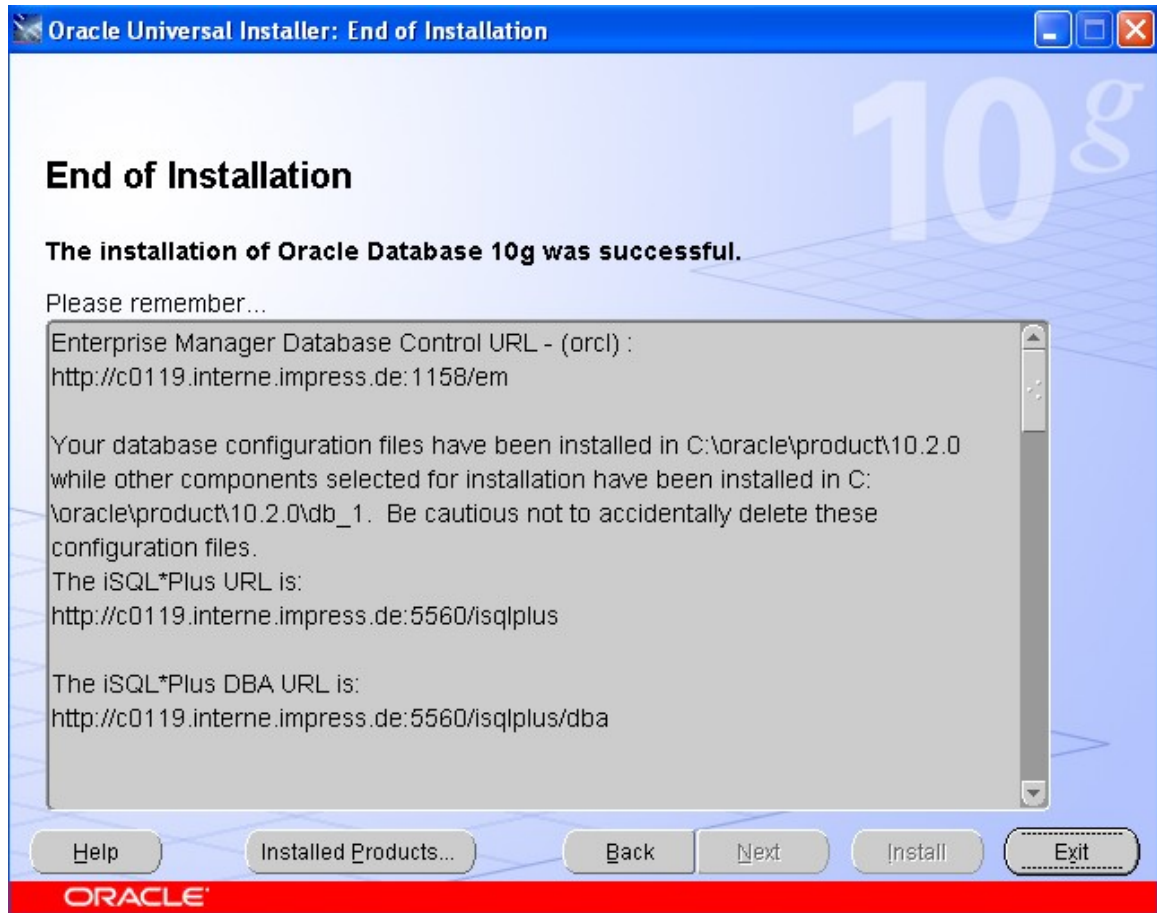
10) Verify that the “sys” and “system” users are not locked.



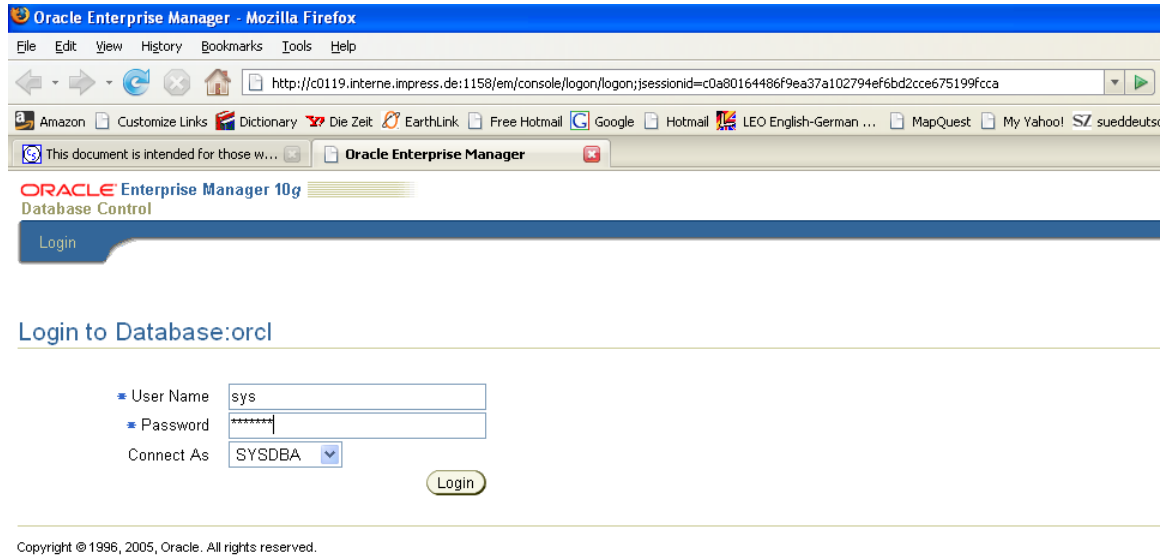
11) Next iSQL Plus will be installed:



12) This is the final installation screen:



- 13) To verify your installation, first try logging into the Oracle Enterprise Manager. The webpage will automatically start, or enter the following address in a browser window: <http://localhost:1158/em/console/logon/logon> Enter the User Name “sys” and the password you provided during the installation and connect as the “SYSDBA”.



## 14) Accept the license agreement:

### Oracle Database 10g Licensing Information

Oracle Enterprise Manager 10g Database Control is designed for managing a single database, which can be either a single instance or a cluster database. The following premium functionality contained within this release of Enterprise Manager 10g Database Control is available only with an Oracle license:

#### Database Diagnostics Pack

- Automatic Workload Repository
- ADDM (Automated Database Diagnostic Monitor)
- Performance Monitoring (Database and Host)
- Event Notifications: Notification Methods, Rules and Schedules
- Event history/metric history (Database and Host)
- Blackouts
- Dynamic metric baselines
- Memory performance monitoring

#### Database Tuning Pack

- SQL Access Advisor
- SQL Tuning Advisor
- SQL Tuning Sets
- Reorganize Objects

#### Configuration Management Pack

- Database and Host Configuration
- Deployments
- Patch Database and View Patch Cache
- Patch staging
- Clone Database
- Clone Oracle Home
- Search configuration
- Compare configuration
- Policies

For a detailed description of above functionality and where it can be used within the product refer to the Oracle Database 10g Licensing Information document.

**I acknowledge and agree that use of this premium functionality requires the purchase of an appropriate license.**

Cancel

I agree

## 15) Check the “Home” tab

ORACLE Enterprise Manager 10g Database Control Setup Preferences Help Logout Database

Logged in As SYS

Database Instance: orcl

Home [Performance](#) [Administration](#) [Maintenance](#)

Page Refreshed Feb 7, 2008 3:20:28 PM  View Data

### General

Status **Up**  
 Up Since **Feb 7, 2008 3:06:10 PM PST**  
 Instance Name **orcl**  
 Version **10.2.0.1.0**  
 Host **c0119.intern.IMPRESS.DE**  
 Listener **LISTENER\_c0119.intern.IMPRESS...**

[View All Properties](#)

### Host CPU

Load **0.00** Paging **9.04** Maximum CPU **2**

### Active Sessions

### SQL Response Time

Baseline is empty.

### Diagnostic Summary

ADDM Findings **No ADDM run available**  
 All Policy Violations **7**  
 Alert Log **No ORA\_\* errors**

### Space Summary

Database Size (GB) **0.85**  
 Problem Tablespaces **0**  
 Segment Advisor Recommendations **0**  
 Space Violations **0**  
 Dump Area Used (%) **81**

### High Availability

Instance Recovery Time (sec) **12**  
 Last Backup **n/a**  
 Usable Flash Recovery Area (%) **100**  
 Flashback Logging **Disabled**

### Alerts

Category **All**  Critical **0** Warning **0**

Severity	Category	Name	Message	Alert Triggered
(No alerts)				

## 16) Check the “Performance” tab

ORACLE Enterprise Manager 10g Database Control Setup Preferences Help Logout Database

Logged in As SYS

Database Instance: orcl

Home [Performance](#) [Administration](#) [Maintenance](#)

View Data

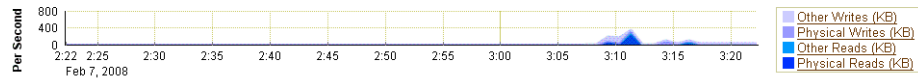
Best viewed using latest SVG plugin

### Host

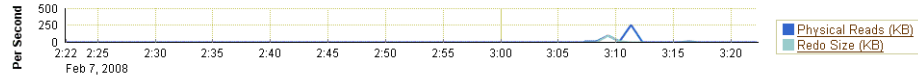
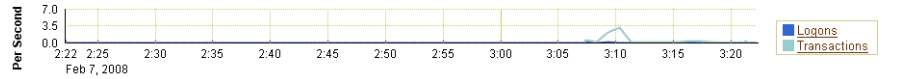
### Average Active Sessions

[Top Activity](#)

### Instance Disk I/O



### Instance Throughput



Instance Throughput Rate  Per Second  Per Transaction

### Additional Monitoring Links

Top Sessions and Top SQL data from ASH can be found on the Top Activity page.

- [Top Activity](#)
- [Top Consumers](#)
- [Duplicate SQL](#)
- [Blocking Sessions](#)
- [Hang Analysis](#)
- [Instance Locks](#)
- [Instance Activity](#)
- [Baseline Normalized Metrics](#)
- [Search Sessions](#)
- [Snapshots](#)
- [SQL Tuning Sets](#)

## 17) Check the “Administration” tab

ORACLE Enterprise Manager 10g Database Control Setup Preferences Help Logout Database

Logged in As SYS

---

Home Performance **Administration** Maintenance

The Administration tab displays links that allow you to administer database objects and initiate database operations inside an Oracle database. The Maintenance tab displays links that provide functions that control the flow of data between or outside Oracle databases.

#### Database Administration

<b>Storage</b> <a href="#">Control Files</a> <a href="#">Tablespaces</a> <a href="#">Temporary Tablespace Groups</a> <a href="#">Datafiles</a> <a href="#">Rollback Segments</a> <a href="#">Redo Log Groups</a> <a href="#">Archive Logs</a>	<b>Database Configuration</b> <a href="#">Memory Parameters</a> <a href="#">Undo Management</a> <a href="#">All Initialization Parameters</a> <a href="#">Database Feature Usage</a>	<b>Database Scheduler</b> <a href="#">Jobs</a> <a href="#">Chains</a> <a href="#">Schedules</a> <a href="#">Programs</a> <a href="#">Job Classes</a> <a href="#">Windows</a> <a href="#">Window Groups</a> <a href="#">Global Attributes</a>
<b>Statistics Management</b> <a href="#">Automatic Workload Repository</a> <a href="#">Manage Optimizer Statistics</a>	<b>Change Database</b> <a href="#">Migrate to ASM</a> <a href="#">Make Tablespace Locally Managed</a>	<b>Resource Manager</b> <a href="#">Monitors</a> <a href="#">Consumer Groups</a> <a href="#">Consumer Group Mappings</a> <a href="#">Plans</a>
<b>Policies</b> <a href="#">Policy Library</a> <a href="#">Policy Violations</a>		

#### Schema

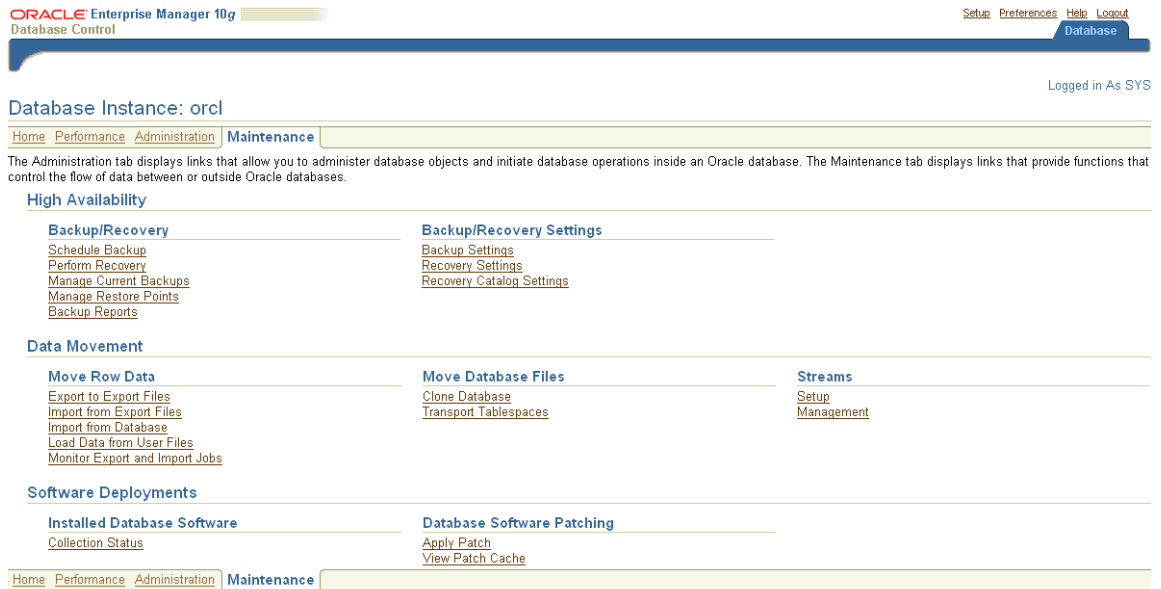
<b>Database Objects</b> <a href="#">Tables</a> <a href="#">Indexes</a> <a href="#">Views</a> <a href="#">Synonyms</a> <a href="#">Sequences</a> <a href="#">Database Links</a> <a href="#">Directory Objects</a> <a href="#">Reorganize Objects</a>	<b>Programs</b> <a href="#">Packages</a> <a href="#">Package Bodies</a> <a href="#">Procedures</a> <a href="#">Functions</a> <a href="#">Triggers</a> <a href="#">Java Classes</a> <a href="#">Java Sources</a>	<b>XML Database</b> <a href="#">Configuration</a> <a href="#">Resources</a> <a href="#">Access Control Lists</a> <a href="#">XML Schemas</a> <a href="#">XMLType Tables</a> <a href="#">XMLType Views</a>
<b>Users &amp; Privileges</b> <a href="#">Users</a> <a href="#">Roles</a> <a href="#">Profiles</a> <a href="#">Audit Settings</a>	<b>Materialized Views</b> <a href="#">Materialized Views</a> <a href="#">Materialized View Logs</a> <a href="#">Refresh Groups</a>	<b>BI &amp; OLAP</b> <a href="#">Dimensions</a> <a href="#">Cubes</a> <a href="#">OLAP Dimensions</a> <a href="#">Measure Folders</a>
<b>User Defined Types</b> <a href="#">Array Types</a> <a href="#">Object Types</a> <a href="#">Table Types</a>		

#### Enterprise Manager Administration

<a href="#">Administrators</a>	<a href="#">Notification Schedule</a>	<a href="#">Blackouts</a>
--------------------------------	---------------------------------------	---------------------------

TIP Use the Enterprise Manager 10g Java Console to manage Advanced Replication and Workspace.

## 18) Check the “Maintenance” Tab



The screenshot shows the Oracle Enterprise Manager 10g Database Control interface. The top navigation bar includes links for Setup, Preferences, Help, and Logout. The main content area is titled "Database Instance: orcl" and is logged in as SYS. The "Maintenance" tab is selected, showing a navigation menu with Home, Performance, Administration, and Maintenance. Below the menu, a descriptive paragraph explains the Maintenance tab's purpose. The main content is organized into sections: High Availability, Backup/Recovery, Backup/Recovery Settings, Data Movement, Move Row Data, Move Database Files, Streams, Software Deployments, Installed Database Software, and Database Software Patching. Each section contains a list of sub-links for various database management tasks.

You can also verify the installation by logging on to the “Starter” Database via SQL Plus:

- 1) Open a command window.
- 2) Enter `sqlplus sys/<password>@orcl as sysdba`
- 3) You should see the following:

```
SQL*Plus: Release 10.2.0.1.0 - Production on Thu Feb 7 15:59:17 2008
Copyright (c) 1982, 2005, Oracle. All rights reserved.

Connected to:
Oracle Database 10g Enterprise Edition Release 10.2.0.1.0 - Production
With the Partitioning, OLAP and Data Mining options
SQL>
```